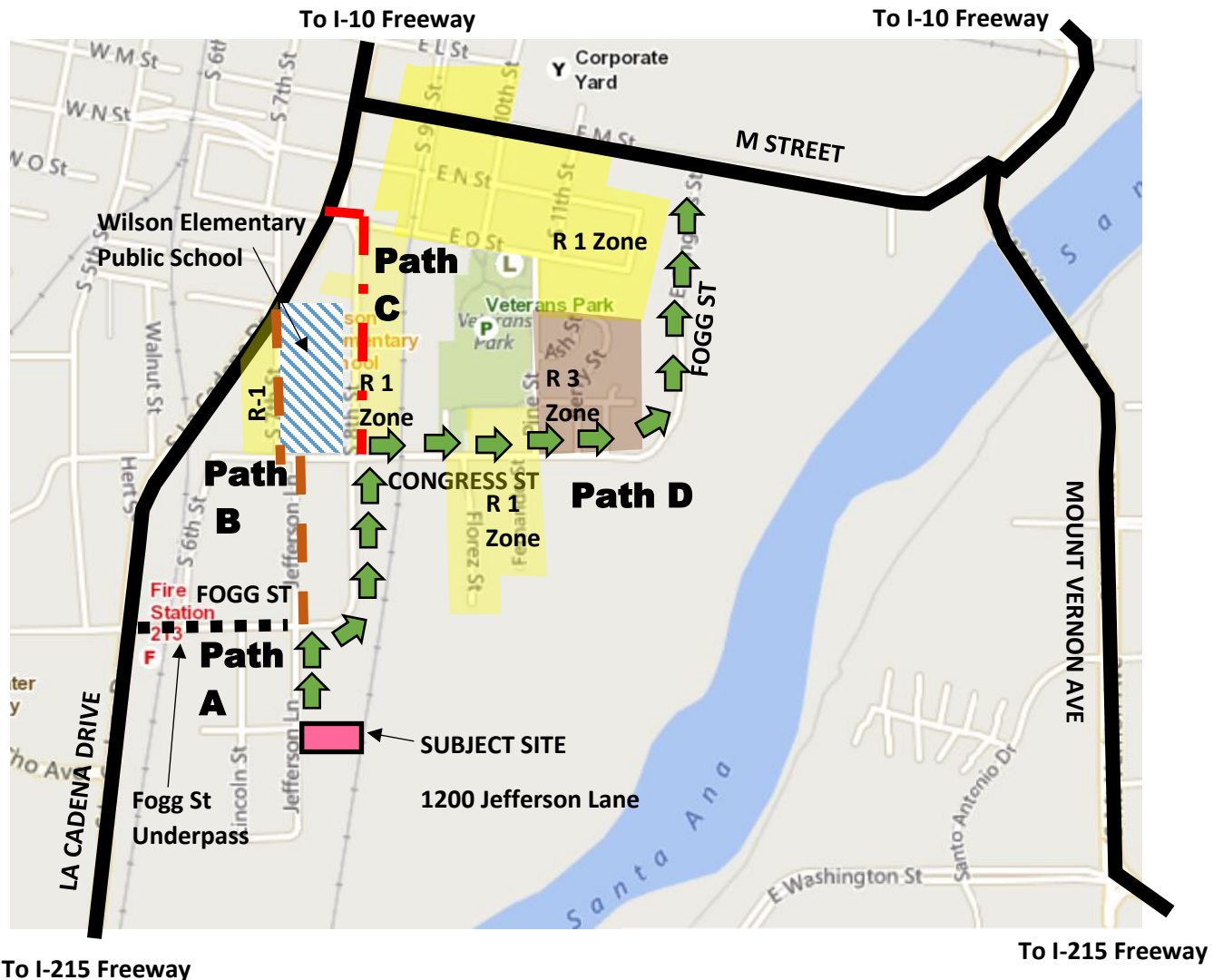


**EXHIBIT: ALTERNATIVE TRUCK PATHS FROM PROJECT SITE TO TRUCK ROUTES
(SOUTH COLTON SDA)**

APN 0163-311-09 (1200 S. Jefferson Lane), Colton, California 92324



City Designated Truck Routes – La Cadena Dr & M St

Path A. Fogg St to La Cadena (trucks not allowed)

Path B. 7th St to La Cadena (trucks not allowed)

Path C. 8th St to La Cadena (trucks not allowed)

**Path D. Jefferson/Fogg/Congress to M St/Mt Vernon
(trucks limited to this path)**

